



A note from Mrs Beardsley

It was great to see some of our Year 1 parents come along to find out all about the Phonics Screening check which this week. In this session, parents found out about when the check will be happening, what this looks like, how your child is supported in school and how to support your child at home. If you were unable to make the meeting, don't worry as we will be sharing the presentation on our website [William Lilley - Website English link](#) Thank you!



EYFS Stay & Play

Thank you to those parents who were able to come along for a stay and play last Wednesday. We would love to welcome you again. Please see dates below for a further opportunity to come and see a phonics session and stay and play for Busy Bees and Reception:

Busy Bees Blue & Yellow groups Wednesday 13th May 12.30 – 13.30

Lovely Ladybirds Tuesday 19th May 9.00-10.00

Brilliant Butterflies Wednesday 20th May 9.00-10.00

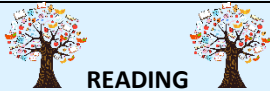
PE kits

As well as making sure that your child has their PE kits in school, please ensure that long hair is tied back on PE days. We also politely request that earrings are removed before PE lessons, preferably at home. If you are unable to remove the earrings (for example because the ears have only recently been pierced), please provide plasters that can be affixed over the top. Unfortunately, we are not allowed to remove earrings and to ensure the safety of your child, we are required to ensure that earrings are removed or covered. Thank you for your support.



Mental Health awareness week – 11th – 17th May 2026

Next week is Mental Health awareness week. At William Lilley we nurture every child as well as teaching and supporting them to understand and manage their feelings. We use a 'relational' approach which is rooted in knowing every child well and use our relationships to support them through emotion coaching and zones of regulation. These strategies also can support your child with anxiety, frustration and 'big' feelings at home too. Please take a look on our website for further information: [William Lilley - Behaviour and safety](#) Further information can also be found on our YouTube channel too! [YouTube William Lilley - managing my feelings and supporting mental health playlist](#) If you would like to talk in more detail about your child's mental health, please do not hesitate to contact the team.



READING

Class trips to Stapleford library are being organised. Look out for dates and further information coming soon.

There is also lots of interesting information on the library website, including book recommendations for different genres or subjects. The example picture shows book recommendations for all ages on the topic of 'being green'. [Children's Books | Inspire - Culture, Learning, Libraries \(inspireculture.org.uk\)](#)



School payments

As we near the end of the first half of the Summer Term, we politely request that all monies due on your child's account are settled by Friday 22 May. Should you require any support in order to be able to do so, please contact the School Office.



We can advise on current balances, potential charges yet to be incurred and payment plans. Please be aware that outstanding amounts from this half term may result in our provision having to be restricted on an individual basis.

Attendance

- Children who arrive late at school can feel embarrassed, uncomfortable and confused walking into a classroom late.
- They can miss out on introductions, important learning and social time.
- Lateness disrupts the learning and routines for everyone.
- Punctuality is an important life skill.
- Being on time is important for children to start the day off calmly; being late can lead children to being unsettled and can affect their behaviour and concentration.
- Being on time maximises the amount of learning time.



Come and join us next week for The Great Big Garden Party. There will be lots of outdoor fun with games, mini beast hunt, sow your own plant seeds, create yogurt pot cross heads and pizza!

Tuesday 12th May KS1

Wednesday 13th May Nursery & Reception

Please book via the schoolmoney app!





Calendar 2025-2026

Date	Event	Time	Who?
Tuesday 12th May & 19th May	Navigating Neurodiversity	13.30-15.00	All parents welcome –
Every Thursday	Reading morning	8.35-8.45	Busy Bees, Reception, Year 1 and Year 2
Wednesday 13th May	Stay & Play	12.30-13.30	Busy Bees Blue Busy Blues Yellow
Tuesday 19th May	Stay & Play	9.00-10.00	Lovely Ladybirds
Wednesday 20th May	Stay & Play	9.00-10.00	Brilliant Butterflies
Monday 22nd June-Friday 26th June	Science Week	All Week	Whole School
Wednesday 1st July	Ark Farm	All day	Busy Bees & Creative Caterpillars
Wednesday 8th July	Manor Farm	All day	Ladybirds & Butterflies
Thursday 9th – Friday 10th July	Y2 Residential		Year 2
Monday 13th- 17th July	Sports week	All week	Whole school
Wednesday 15th July	Pottered sports	10.00am & 13.30 (details to follow)	Nursery & Reception
Thursday 16th July	Sports Day	13.15	Flamingos Kingfishers Puffins
Monday 20th July	Culture Day	All Day	Whole school

Half Term Monday 25th May- Friday 29th May

Year Group News

Early Years Foundation Stage (2 Year olds, F1 and F2)



We have enjoyed the four-day week this week but even though it has been a day shorter we have still managed to fit in lots of learning! We have observed the caterpillars turning from tiny into huge and are excited to see them form into their cocoons over the next couple of days.

Next week we have some very special eggs being delivered and cannot wait to see the awe and wonder in the children as they watch them hatch and grow! We are hoping to keep the arrival of the eggs a surprise for the children- so watch this space!



Brilliant Butterflies and Lovely Ladybirds

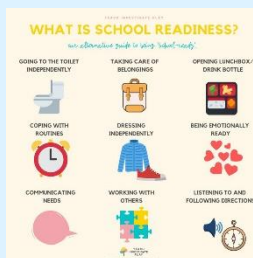
In maths, we have started to work on subtraction. We have used first, then and now stories to work out our answers. This would be something fun you could do with your children at home. 'First there were 10, we took 3 away now there are 7.' We have used tens frames and counters to help us in class but you could use any objects you can find at home.

In phonics, we have continued to work hard and are seeing great progress. In talk for writing, the children are building their confidence to write independently. This week we have completed our innovation of the story Farmer Duck and the children are starting to write a beginning sentence for their own story.

Busy Bees

In maths, we have been looking at more and less. The children have been comparing piles by size and deciding if there is more or less in a given pile. In phonics, children have started to look at the Read Write Inc scheme for nursery in preparation for those children who are starting in Reception in September.

School readiness is going to be a main focus for these children as the term progresses. You can help them at home by supporting their independence:



- Putting on their own shoes and socks
- Zipping up their own coat
- Name recognition
- Ask for help when it is needed
-

Creative Caterpillars

This week we have played following the trajectory schema. We have learnt the song 'bouncing high, bouncing low. We have had lots of fun dropping teddies into buckets and washing the babies in the water- watching how the water pours fro



Key Stage One (Year 1 and 2)



The children have really enjoyed our flag making lessons this week. We looked at examples of flags and used these to create our own design. The children then cut their own shapes out of felt. All of the year 2 children had an opportunity to sew some of their pieces together.

Next week we will continue with our 'Nadira and the Pirates' in



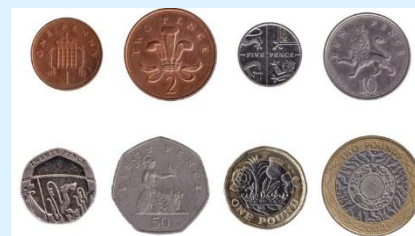
English. All of the children will be writing their own lost and found

pirate story. We will include similes, adjectives, and speech marks in our writing.

In topic lessons we will be looking at seasonal change and changes in the weather. We will also be thinking of ways to keep ourselves safe in our SCARF lessons.

The children will continue to develop their attacking and defending skills in PE.

In maths the year 1 children will be using coins to calculate totals. They will use their knowledge of counting in 2s, 5s and 10s to help them. The year 2 children will be adding, crossing the tens barrier. They will use their knowledge of place value and number lines to help them.





Life Education
East Midlands
Helping children make healthy choices

Family Learning



Navigating Neurodiversity

A free, four week course to help you understand neurodiversity and to find strategies to help your child.

William Lilly
Infant and
Nursery
Tuesday
afternoons,
1.30-3.00pm
28th April, 5th
May, 12th May,
19th May

Home learning activities provided to help you understand your child's individual needs.

Learn strategies to help your child manage their emotions and sensory needs,

Meet other people in a similar position and share strategies and ideas.



★ All parents, carers and family members welcome

★ Refreshments provided

You will discover:
What neurodiversity means and aspects of different types of neurodivergence.
The difference between sensory seeking and sensory avoidance.
How to help your child when they feel 'big' emotions.

An approved delivery partner of Community & Family Learning



Nottingham
City Council



Community & Family Learning Nottingham
Lifelong learning for a better tomorrow



This course is funded by Nottingham City Council's Community & Family Learning Service With Funding From East Midlands Combined County Authority.



BBC

Is your child finding it hard to make a friend?

The award-winning makers of The Dog House are casting for a brand-new BBC series about friendship.

We are looking for children aged 5 to 8 from all over the UK who need a little help navigating the world of friendship. Over three days, a team of child psychologists will help them build the social skills and confidence to make real, lasting connections with other kids.

If you'd like to help your child make a friend (with no pressure to take part), please apply at:

bemyfriend.tv





**Notts County
Foundation**

MAY HOLIDAY CLUB

Every day 9am - 3pm

Tuesday 26th May - Friday 29th May 2026

SCAN HERE



£15.00 per day

Book all 4 days for £50.00 using code **NOTTSMAY4FOR50**

Multi-sports | Themed days | Crafts & activities

www.nottscountyfoundation.org.uk

Themed days

Day	Theme
Monday	Closed - Bank Holiday
Tuesday	Football
Wednesday	Sports Day
Thursday	Olympics
Friday	Creativity Day

Each day will consist of a mixture of Sports, Games and Craft activities.



**Notts County
Foundation**

www.nottscountyfoundation.org.uk