



A note from Mrs Beardsley

We are thrilled to present our new school website! This includes all updated information and includes points of reference for families. Please take the time to have a look through the key information and parents section. The key information includes links to our policies, safeguarding practices as well as behaviour and safety, including information on emotion coaching and growth mindset. The parents section has the school term dates, attendance information and support section including information and important links on aspects such as online safety, sleep and mental health. We would love to hear your feedback and let us know if there is any other information that you feel would be useful to be available on our site. Please email office18@wiliamlilley.notts.sch.uk



Healthy School

We as a school recognise the positive contribution of a healthy lifestyle to good behaviour, self-esteem and achievement. We would like to remind you to send in a labelled water bottle each day with your child containing **water only** to keep the children hydrated.

Parking

We appreciate that parking around school is limited and can be an issue at drop off and home time. However, please can we remind parents that it is dangerous and illegal to park on the Yellow Zig Zag road markings. Blocking this area even momentarily causes a hazard for our families on both sides of the road. Parking Enforcement Officers are in the area and any cars found parked on the zig-zags will be issued with a Penalty Notice.



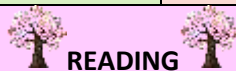
School Milk

If you have not yet placed this term's school milk order there is still time to do so by visiting www.coolmilk.com, logging into your online account and selecting 'make a payment'. If you have not yet registered your child but wish to do so, please visit www.coolmilk.com/register. For any questions related to our milk scheme, please contact Cool Milk directly at www.coolmilk.com/contact



Valentine craft theme nights

Theme night are back this half term
 Monday 10th February - Years 1 & 2
 Tuesday 11th February - Nursery & Reception
 3.15—6.00
 See attached flyer please book via the schoolmoney app



READING

EXCITING NEWS FOR NURSERY CHILDREN!!

Reading morning begins for Nursery children on **Thursday 23rd January**. This is a chance for parents and carers to come and read with their children in the Nursery classrooms from **8.35am to 8.55am every Thursday**. The children across the school LOVE reading morning and we are so excited that Nursery are now joining us! See you there!

Attendance Matters



Thank you for your support in enabling your child to be in school on time all day every day. Ensuring your child is here for 8.45am gives them time to socialise with their friends, organise their things independently and to start their day calmly. Did you know...being 5 minutes late every day equates to 3 days lost learning over the academic year and being 15 minutes late every day is the same as being absent for 2 weeks of the year? If you are finding it difficult to ensure your child arrives on time, and with what they need for the day, please speak to a member of staff.



What a lovely week we have had lots of games and crafts and a chance for the children to play with their friends. Friday night is make your own pizza night why not come and join the fun. Bookings can be made via the schoolmoney app





**Calendar
2024-2025**

Date	Event	Time	Who?
Every Thursday (Back on 16th January)	Reading morning	8.35-8.55am	Reception and Key Stage 1
Wednesday 22nd 29th Jan 5th 12th Feb	Ice skating	12.30-15.15	Year 1
Wednesday 22nd 29th Jan 5th 12th Feb	Martial Arts	Afternoon sessions	Year 2
Every Thursday (from 23rd January)	Reading morning	8.35-8.50am	Nursery
Friday 24th January	Family Friday	12.30	Puffins
Friday 31st January	Family Friday	12.30	Flamingoes
Friday 7th February	Family Friday	12.30	Ladybirds & Butterflies
Monday 10th February	Valentine craft Theme night	15.15-18.00	Years 1 & 2
Tuesday 11th February	Valentine craft Theme night	15.15-18.00	Nursery & Reception
Wednesday 12th February	Parents Evening	15.30-19.00	
Thursday 13th February	Parents Evening	15.30-17.00	
Thursday 11th July-Friday 12th July	Woodlands Residential	All day	Year 2

HALF-TERM : Monday 17th February -Friday 21st February

Inset Day: Monday 24th February

SCHOOL REOPENS: Tuesday 25th February

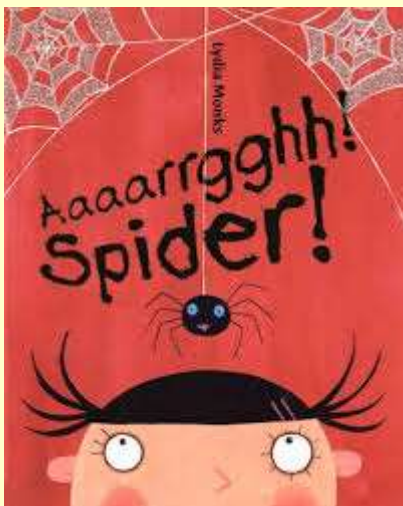
Year Group News

Nursery



It has been lovely to welcome new children to Nursery this week. They have settled in really well and the children have been very friendly and welcoming. We started our new topic 'Rhyme Time'. The children enjoyed performing lots of different animal nursery rhymes.

Next week we will be using a story map to learn the story of 'Incy Wincy'. Look out for a copy of our story map, we will send it home next week. The children will be creating their own version of the rhyme using different mini-beasts. We will be reading the book 'Aaaarrgghh Spider' and creating our own spiders using paper, paint and playdough.



Please can we ask you to keep your children off the grass/mud before school as the classrooms are getting very messy. Feel free to play on the equipment in the playground if your child wants to climb. Alternatively, their wellies are on the shelf under the shelter. Thank you for your support.

Reception

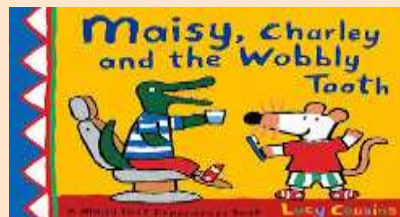


This week has been full of fun activities and learning about 'Real life superheroes' and this week we have been focusing on 'The Police'. We have learnt about what their role is, the uniform they wear, how they help us to keep the laws and look after us. The children have also enjoyed learning our class story about 'supertato' along with the actions and key vocabulary.



Next week we will be learning about the 'real life superheroes' the 'dentists'!

We will be reading the book 'Maisy, Charley and the wobbly tooth' and exploring dental hygiene and brushing our teeth as a series of events. We will be also learning about keeping our bodies healthy through our SCARF lesson.



Through 'Talk for Writing' the children will be drawing and writing some of their own class story. In maths we will be learning about 'capacity' and that it is an amount that something can hold.

Library Visit

In a few weeks' time we will be going to the library for a visit, nearer the time we will send home a form to apply for a library card, however if you already have a library card you will not need to fill one in. Also we will be asking for helpers to come along to the library with us. We will do a class Dojo post nearer the time.

Key Stage One



It has been a pleasure to work alongside our amazing children this week in KS1! The year ones have continued to impress us with their resilience and determination during our ice-skating sessions. The year twos have really got stuck in with their martial arts sessions and learning new skills!

During our geography lessons we have been exploring climates in different countries and compass points to support our map skills.



Next week, we will be revisiting the continents and oceans learning that we did back in Autumn term and learning about how climates and weather varies in different areas of the world.

We have really loved our Talk for Writing text The Storm Whale and next week we will be writing our own finding tales including adjectives and conjunctions. Year twos will also be including similes in their stories.

In maths, year ones will be applying their knowledge of addition to 2-digit numbers using concrete objects and number facts to help them. Year twos will be practising their quick recall of times tables and solving multiplication problems.

WILLIAM LILLEY

FAMILY FRIDAYS

You're invited to enjoy a
school meal with your
child!

17 January	Kingfishers
24 January	Puffins
31 January	Flamingos
7 February	Ladybirds & Butterflies

All welcome!

12:30 - 1:00PM

Only £3.54

Book now through
your SchoolMoney
app.
Contact the office if
you have any
allergies.

NOROVIRUS? NORRACHANCE!

Norovirus (the winter vomiting bug) causes **vomiting and diarrhoea**.
It can be very unpleasant, but usually goes away in about two days.



Stay at home for
48 hours after
symptoms have
stopped to prevent
the spread of
infection



Wash your
hands frequently
with soap
and water

Find out how to help yourself if you have **diarrhoea and vomiting** at
www.nottinghamshire.gov.uk/norovirus or call **NHS 111**



Nottinghamshire
County Council

NHS

**WILLIAM LILLEY
MINI EXPLORERS**

***Valentine's*
CRAFT
THEME NIGHT**

***Nursery & Reception
Tuesday 11 February
3:15 - 6:00pm***

**MUSIC PARTY CARD
POT FOOD MAKING
DECORATING FLOWER
PHOTO FRAME CRAFTING
DESIGNING**

**£12 PER CHILD (FREE FOR PUPIL
PREMIUM CHILDREN)
BOOK NOW VIA YOUR SCHOOLMONEY APP**

**WILLIAM LILLEY
MINI EXPLORERS**

***Valentine's*
CRAFT
THEME NIGHT**

***Years One & Two
Monday 10 February
3:15 - 6:00pm***

**MUSIC PARTY CARD
POT FOOD MAKING
DECORATING FLOWER
PHOTO FRAME CRAFTING
DESIGNING**

**£12 PER CHILD (FREE FOR PUPIL
PREMIUM CHILDREN)
BOOK NOW VIA YOUR SCHOOLMONEY APP**